

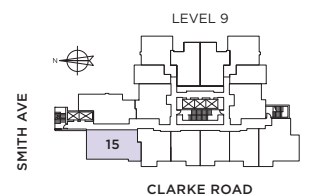
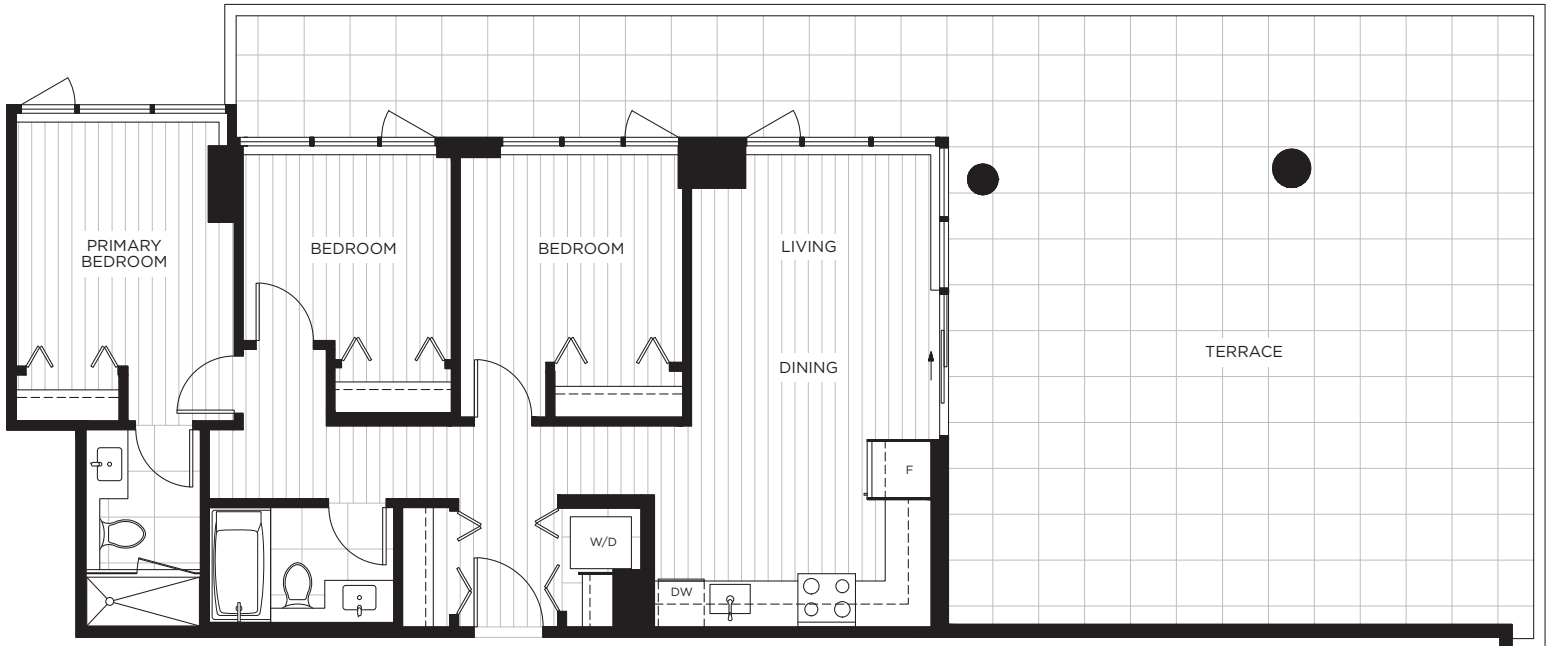


HIGHPOINT
LUXURY RENTAL HOMES

E3 PLAN

SUITE 915
3 BEDROOM
2 BATH

INDOOR LIVING: 870 SQ. FT.
OUTDOOR LIVING: 832 SQ. FT.
TOTAL: 1,702 SQ. FT.



The developer and the landlord reserve the right to modify or change dimensions, sizes, layouts, orientations, and materials should they be necessary. Any measurements provided are approximate. Actual suite sizes are as per the architectural drawings. Patio, terrace and balcony sizes vary per plan and floor level. Windows, columns, privacy screens, demising walls, spandrel and guardrail details may vary depending on the plan and floor level. Final floor plans may be a mirror image of the floor plans shown. The quality suites at Highpoint are built by LM Highpoint Homes Limited Partnership. E. & O.E.



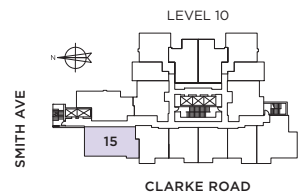
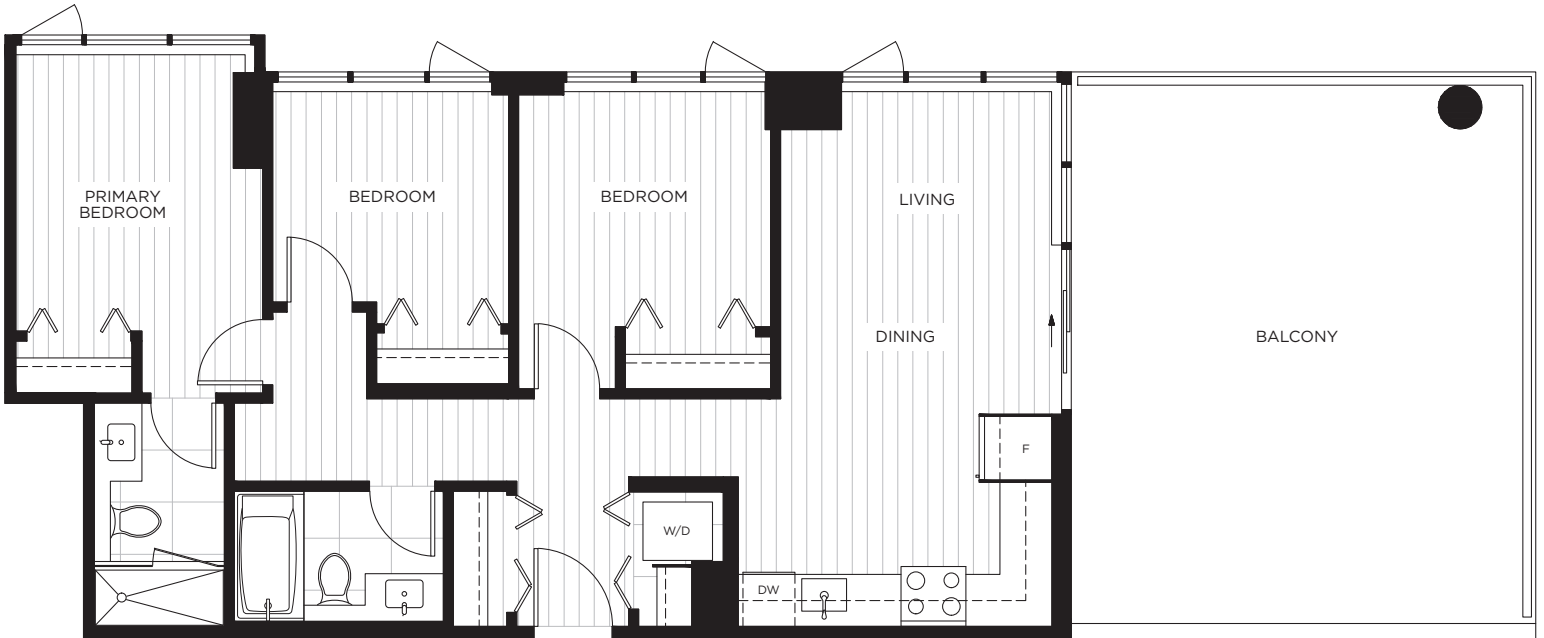
HIGHPOINT

LUXURY RENTAL HOMES

E3 PLAN

SUITE 1015
3 BEDROOM
2 BATH

INDOOR LIVING: 870 SQ. FT.
OUTDOOR LIVING: 359 SQ. FT.
TOTAL: 1,229 SQ. FT.



The developer and the landlord reserve the right to modify or change dimensions, sizes, layouts, orientations, and materials should they be necessary. Any measurements provided are approximate. Actual suite sizes are as per the architectural drawings. Patio, terrace and balcony sizes vary per plan and floor level. Windows, columns, privacy screens, demising walls, spandrel and guardrail details may vary depending on the plan and floor level. Final floor plans may be a mirror image of the floor plans shown. The quality suites at Highpoint are built by LM Highpoint Homes Limited Partnership. E. & O.E.