

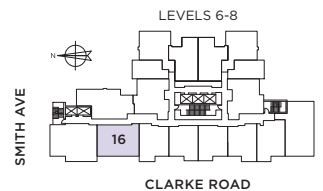


HIGHPOINT
LUXURY RENTAL HOMES

D1 PLAN

**2 BEDROOM
2 BATH**

INDOOR LIVING: 735 SQ. FT.
OUTDOOR LIVING: 166 SQ. FT.
TOTAL: 901 SQ. FT.



The developer and the landlord reserve the right to modify or change dimensions, sizes, layouts, orientations, and materials should they be necessary. Any measurements provided are approximate. Actual suite sizes are as per the architectural drawings. Patio, terrace and balcony sizes vary per plan and floor level. Windows, columns, privacy screens, demising walls, spandrel and guardrail details may vary depending on the plan and floor level. Final floor plans may be a mirror image of the floor plans shown. The quality suites at Highpoint are built by LM Highpoint Homes Limited Partnership. E. & O.E.

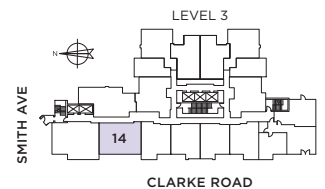
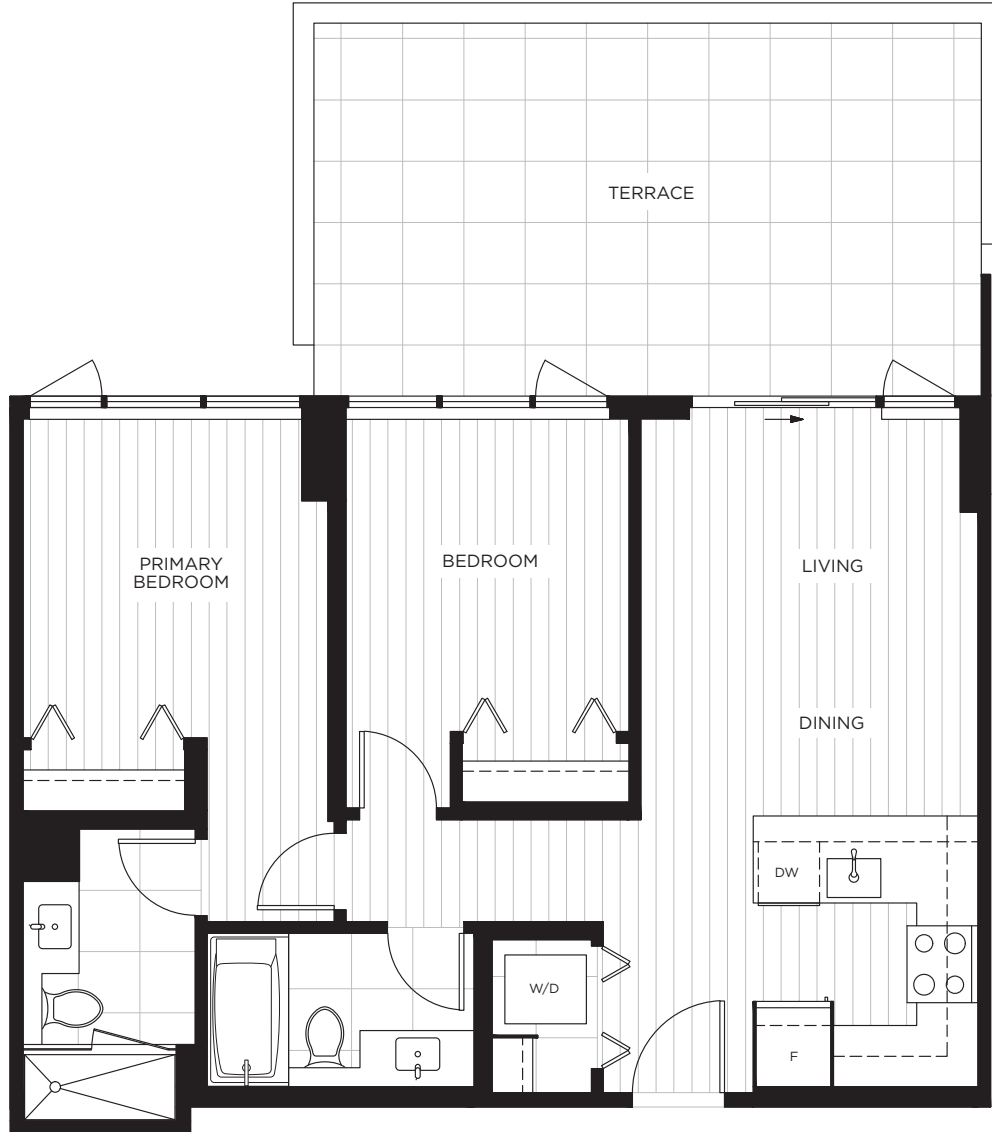


HIGHPOINT
LUXURY RENTAL HOMES

D1 PLAN

SUITE 314
2 BEDROOM
2 BATH

INDOOR LIVING: 735 SQ. FT.
OUTDOOR LIVING: 261 SQ. FT.
TOTAL: 996 SQ. FT.



The developer and the landlord reserve the right to modify or change dimensions, sizes, layouts, orientations, and materials should they be necessary. Any measurements provided are approximate. Actual suite sizes are as per the architectural drawings. Patio, terrace and balcony sizes vary per plan and floor level. Windows, columns, privacy screens, demising walls, spandrel and guardrail details may vary depending on the plan and floor level. Final floor plans may be a mirror image of the floor plans shown. The quality suites at Highpoint are built by LM Highpoint Homes Limited Partnership. E. & O.E.