



**HIGHPOINT**  
LUXURY RENTAL HOMES

# B3 PLAN

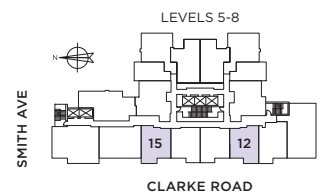
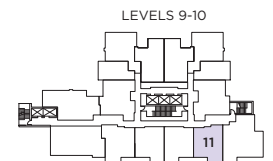
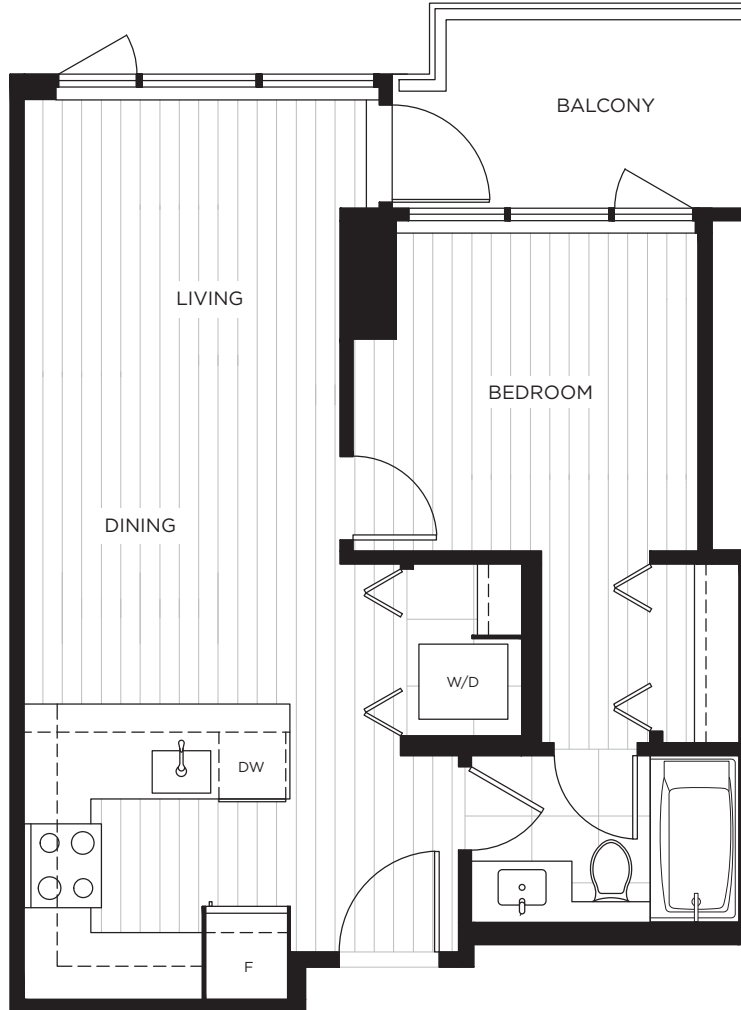
**1 BEDROOM**

**1 BATH**

INDOOR LIVING: 553 SQ. FT.

OUTDOOR LIVING: 48-53 SQ. FT.

TOTAL: 601-606 SQ. FT.



The developer and the landlord reserve the right to modify or change dimensions, sizes, layouts, orientations, and materials should they be necessary. Any measurements provided are approximate. Actual suite sizes are as per the architectural drawings. Patio, terrace and balcony sizes vary per plan and floor level. Windows, columns, privacy screens, demising walls, spandrel and guardrail details may vary depending on the plan and floor level. Final floor plans may be a mirror image of the floor plans shown. The quality suites at Highpoint are built by LM Highpoint Homes Limited Partnership. E. & O.E.



**HIGHPOINT**  
LUXURY RENTAL HOMES

# B3 PLAN

**SUITES 310, 313**

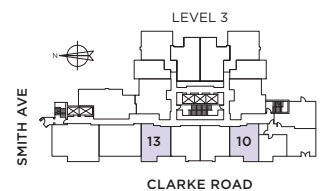
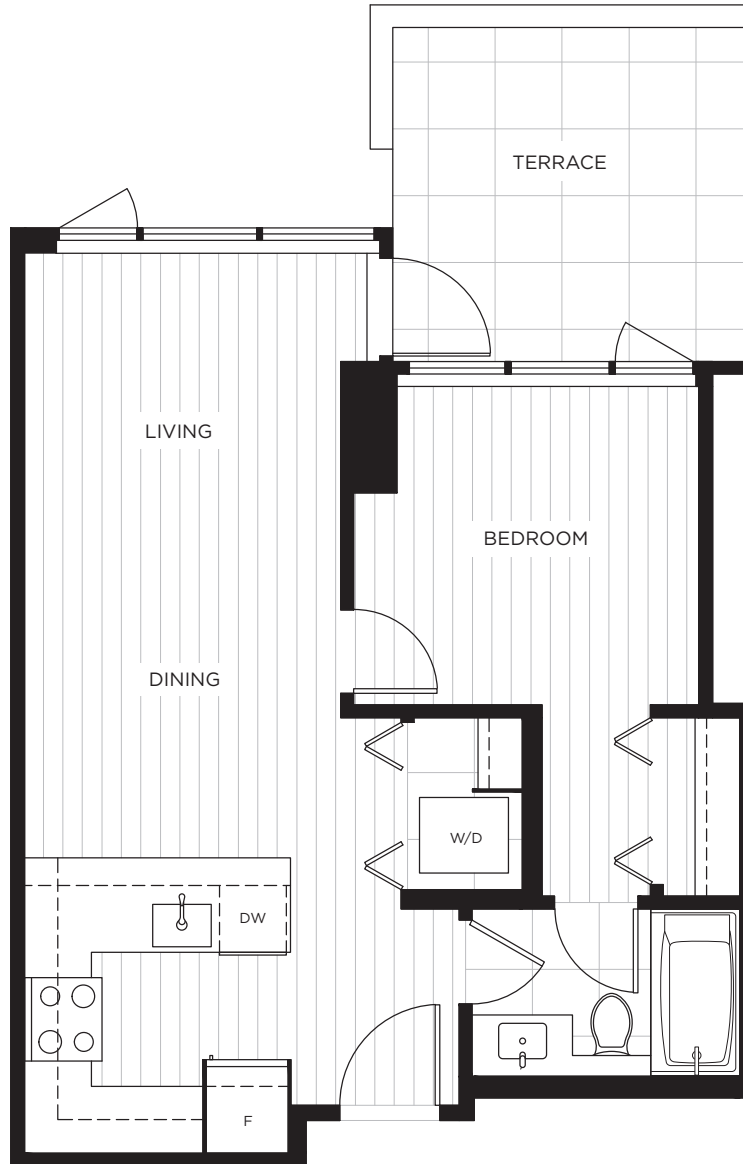
**1 BEDROOM**

**1 BATH**

INDOOR LIVING: 553 SQ. FT.

OUTDOOR LIVING: 100 SQ. FT.

TOTAL: 653 SQ. FT.



The developer and the landlord reserve the right to modify or change dimensions, sizes, layouts, orientations, and materials should they be necessary. Any measurements provided are approximate. Actual suite sizes are as per the architectural drawings. Patio, terrace and balcony sizes vary per plan and floor level. Windows, columns, privacy screens, demising walls, spandrel and guardrail details may vary depending on the plan and floor level. Final floor plans may be a mirror image of the floor plans shown. The quality suites at Highpoint are built by LM Highpoint Homes Limited Partnership. E. & O.E.

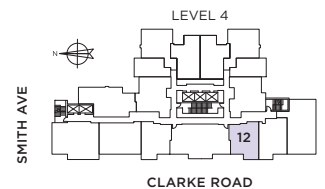
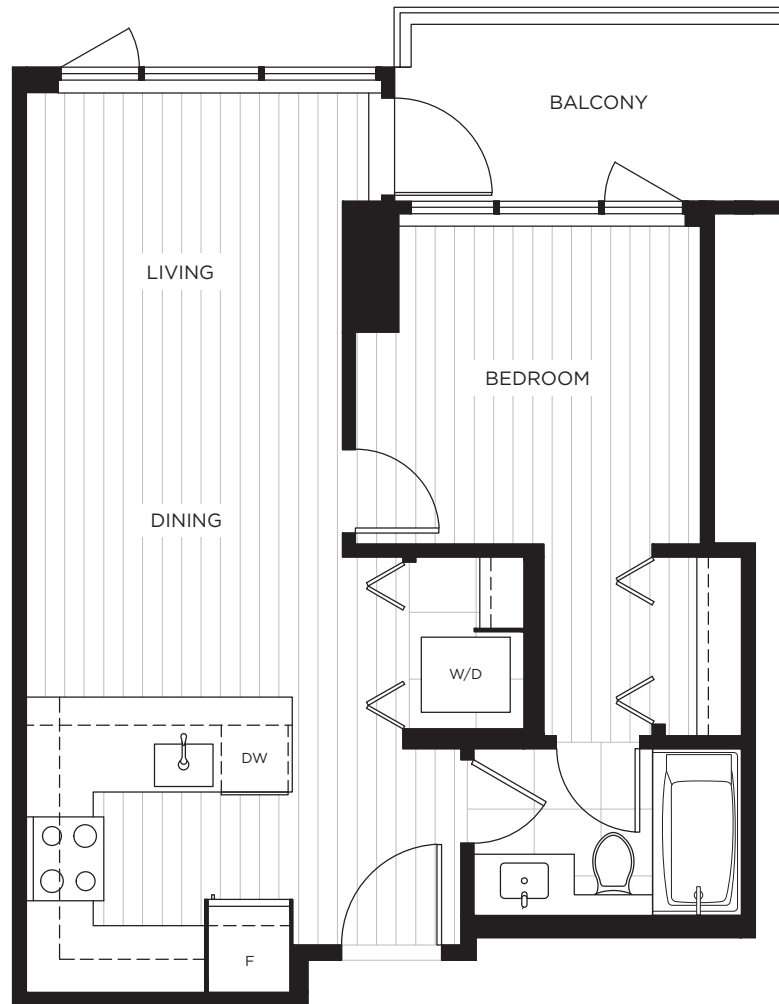


**HIGHPOINT**  
LUXURY RENTAL HOMES

# B3 PLAN

**SUITE 412**  
**1 BEDROOM**  
**1 BATH**

INDOOR LIVING: 553 SQ. FT.  
OUTDOOR LIVING: 59 SQ. FT.  
TOTAL: 612 SQ. FT.



The developer and the landlord reserve the right to modify or change dimensions, sizes, layouts, orientations, and materials should they be necessary. Any measurements provided are approximate. Actual suite sizes are as per the architectural drawings. Patio, terrace and balcony sizes vary per plan and floor level. Windows, columns, privacy screens, demising walls, spandrel and guardrail details may vary depending on the plan and floor level. Final floor plans may be a mirror image of the floor plans shown. The quality suites at Highpoint are built by LM Highpoint Homes Limited Partnership. E. & O.E.