

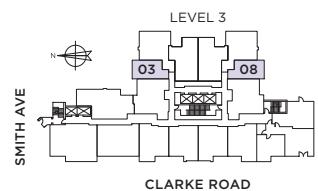
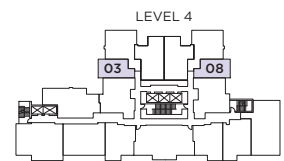
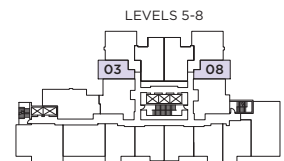
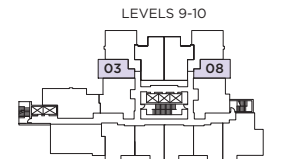
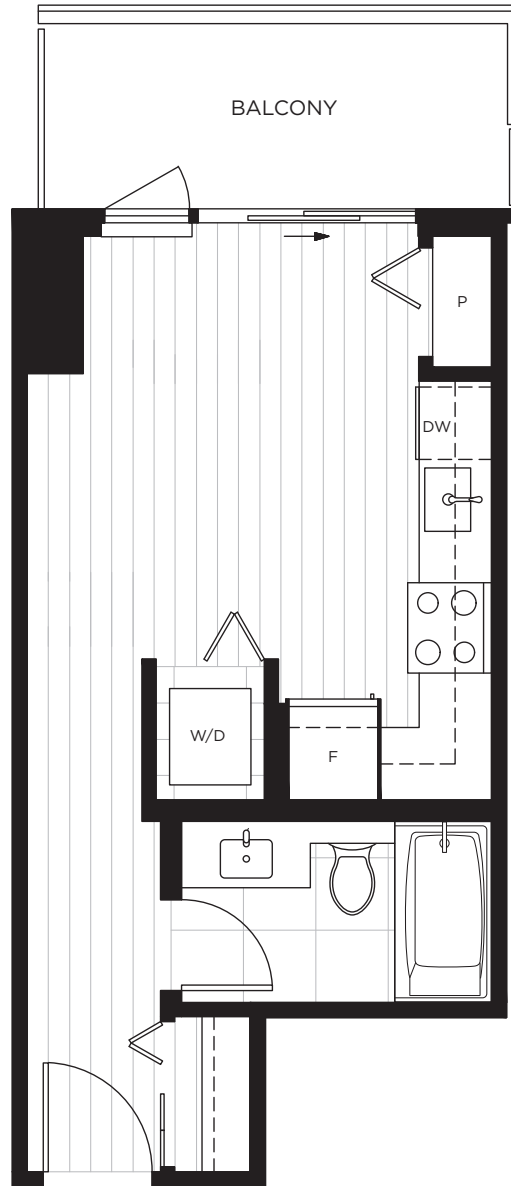


HIGHPOINT
LUXURY RENTAL HOMES

A PLAN

STUDIO 1 BATH

INDOOR LIVING: 333 SQ. FT.
OUTDOOR LIVING: 63-64 SQ. FT.
TOTAL: 396-397 SQ. FT.



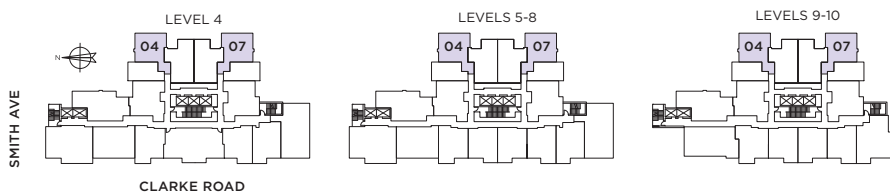
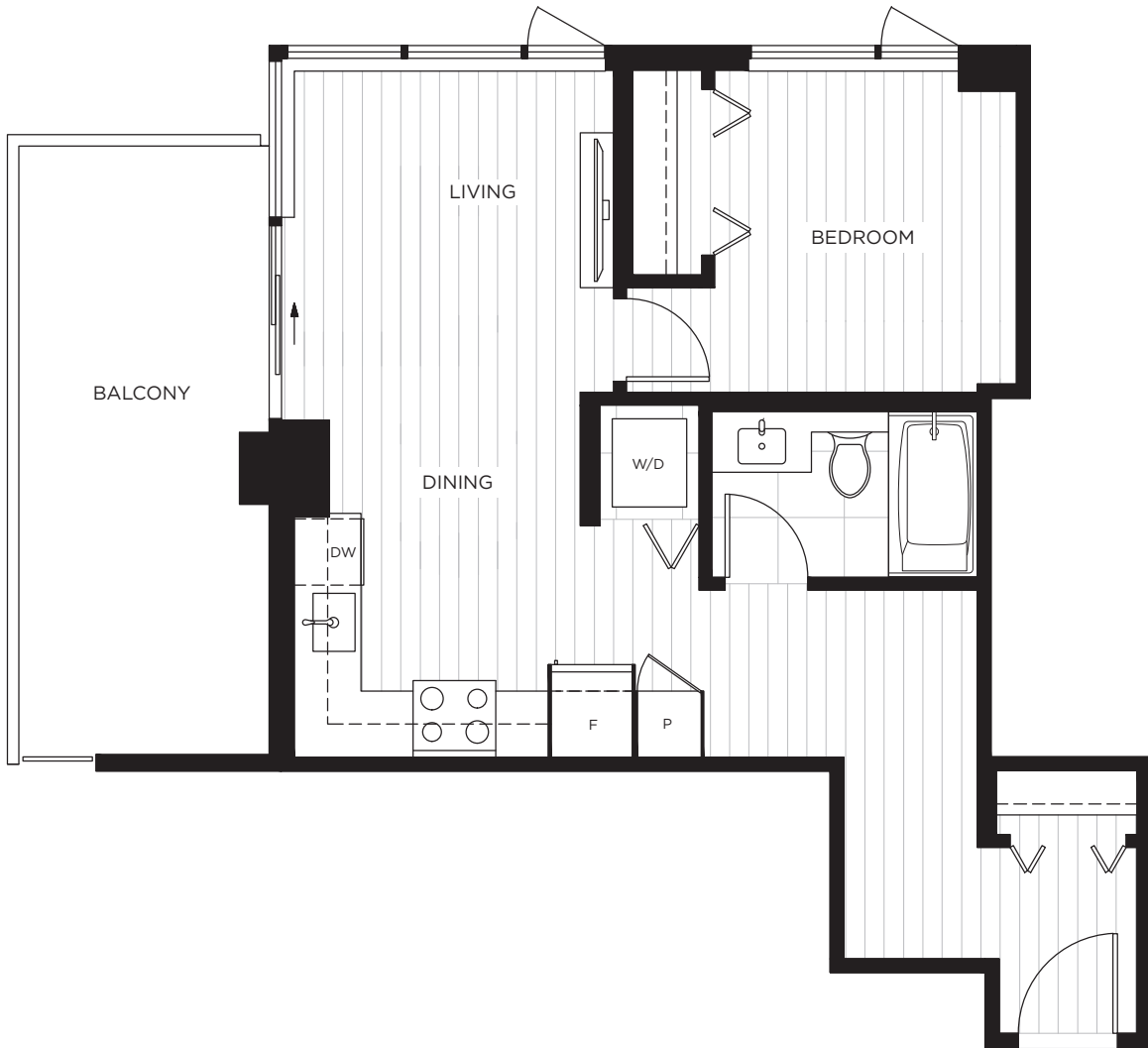


HIGHPOINT
LUXURY RENTAL HOMES

B PLAN

1 BEDROOM
1 BATH

INDOOR LIVING: 563 SQ. FT.
OUTDOOR LIVING: 133-134 SQ. FT.
TOTAL: 696-697 SQ. FT.



The developer and the landlord reserve the right to modify or change dimensions, sizes, layouts, orientations, and materials should they be necessary. Any measurements provided are approximate. Actual suite sizes are as per the architectural drawings. Patio, terrace and balcony sizes vary per plan and floor level. Windows, columns, privacy screens, demising walls, spandrel and guardrail details may vary depending on the plan and floor level. Final floor plans may be a mirror image of the floor plans shown. The quality suites at Highpoint are built by LM Highpoint Homes Limited Partnership. E. & O.E.

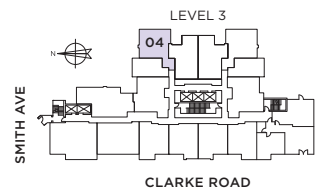


HIGHPOINT
LUXURY RENTAL HOMES

B PLAN

SUITE 304
1 BEDROOM
1 BATH

INDOOR LIVING: 563 SQ. FT.
OUTDOOR LIVING: 73 SQ. FT.
TOTAL: 636 SQ. FT.



The developer and the landlord reserve the right to modify or change dimensions, sizes, layouts, orientations, and materials should they be necessary. Any measurements provided are approximate. Actual suite sizes are as per the architectural drawings. Patio, terrace and balcony sizes vary per plan and floor level. Windows, columns, privacy screens, demising walls, spandrel and guardrail details may vary depending on the plan and floor level. Final floor plans may be a mirror image of the floor plans shown. The quality suites at Highpoint are built by LM Highpoint Homes Limited Partnership. E. & O.E.

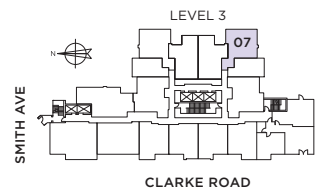


HIGHPOINT
LUXURY RENTAL HOMES

B PLAN

SUITE 307
1 BEDROOM
1 BATH

INDOOR LIVING: 563 SQ. FT.
OUTDOOR LIVING: 131 SQ. FT.
TOTAL: 694 SQ. FT.



The developer and the landlord reserve the right to modify or change dimensions, sizes, layouts, orientations, and materials should they be necessary. Any measurements provided are approximate. Actual suite sizes are as per the architectural drawings. Patio, terrace and balcony sizes vary per plan and floor level. Windows, columns, privacy screens, demising walls, spandrel and guardrail details may vary depending on the plan and floor level. Final floor plans may be a mirror image of the floor plans shown. The quality suites at Highpoint are built by LM Highpoint Homes Limited Partnership. E. & O.E.

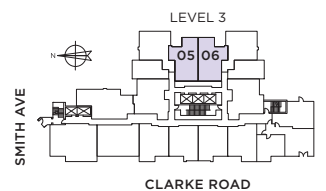
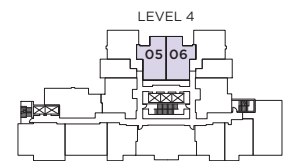
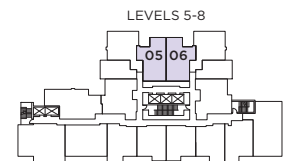
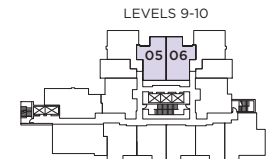
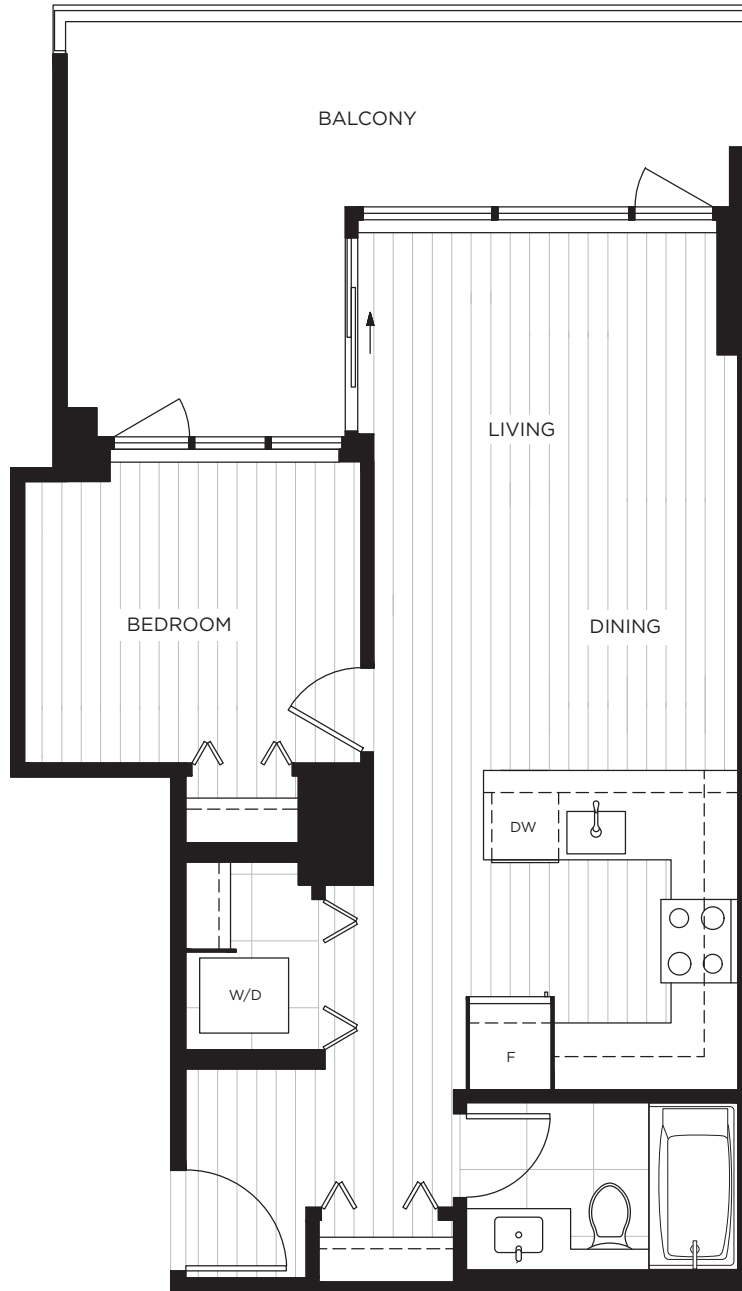


HIGHPOINT
LUXURY RENTAL HOMES

B1 PLAN

**1 BEDROOM
1 BATH**

INDOOR LIVING: 586 SQ. FT.
OUTDOOR LIVING: 166 SQ. FT.
TOTAL: 752 SQ. FT.





HIGHPOINT
LUXURY RENTAL HOMES

B2 PLAN

SUITES 311, 312

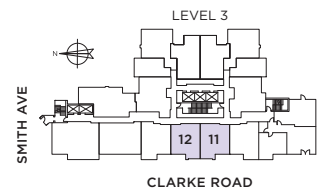
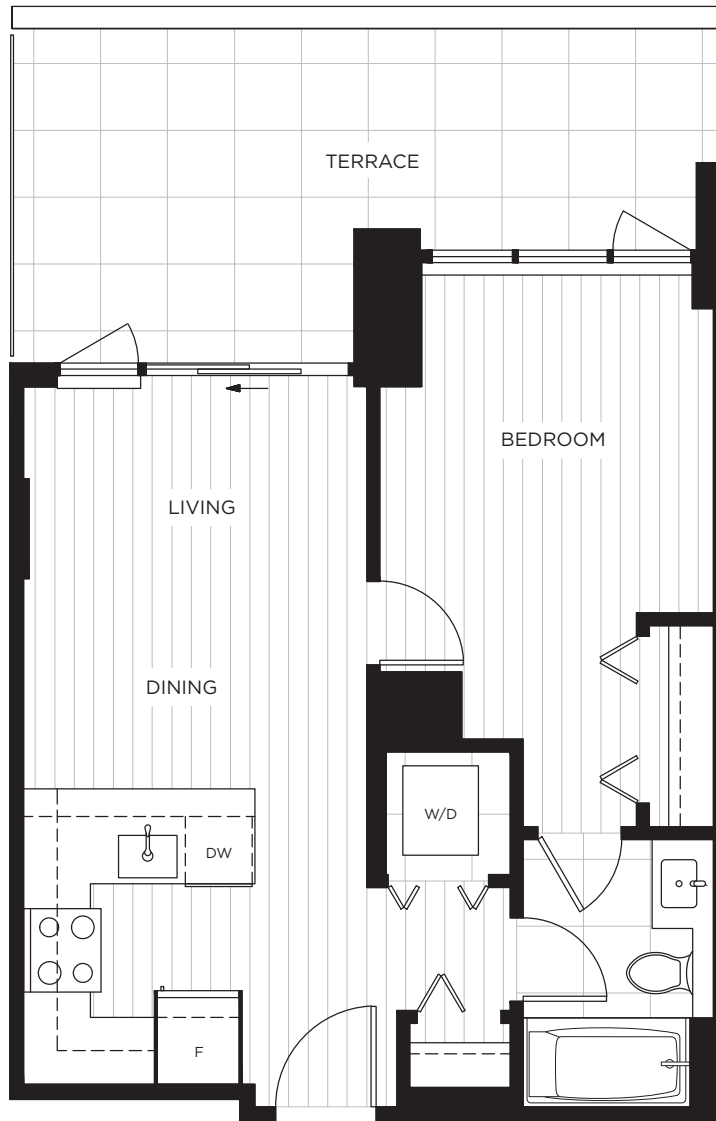
1 BEDROOM

1 BATH

INDOOR LIVING: 515 SQ. FT.

OUTDOOR LIVING: 169 SQ. FT.

TOTAL: 684 SQ. FT.





HIGHPOINT
LUXURY RENTAL HOMES

B2 PLAN

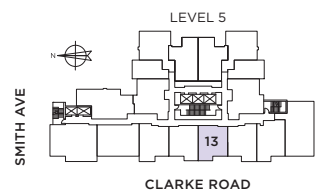
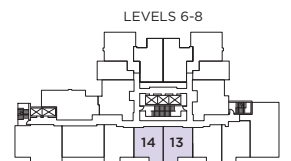
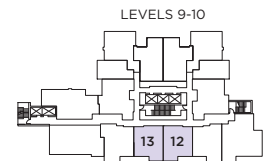
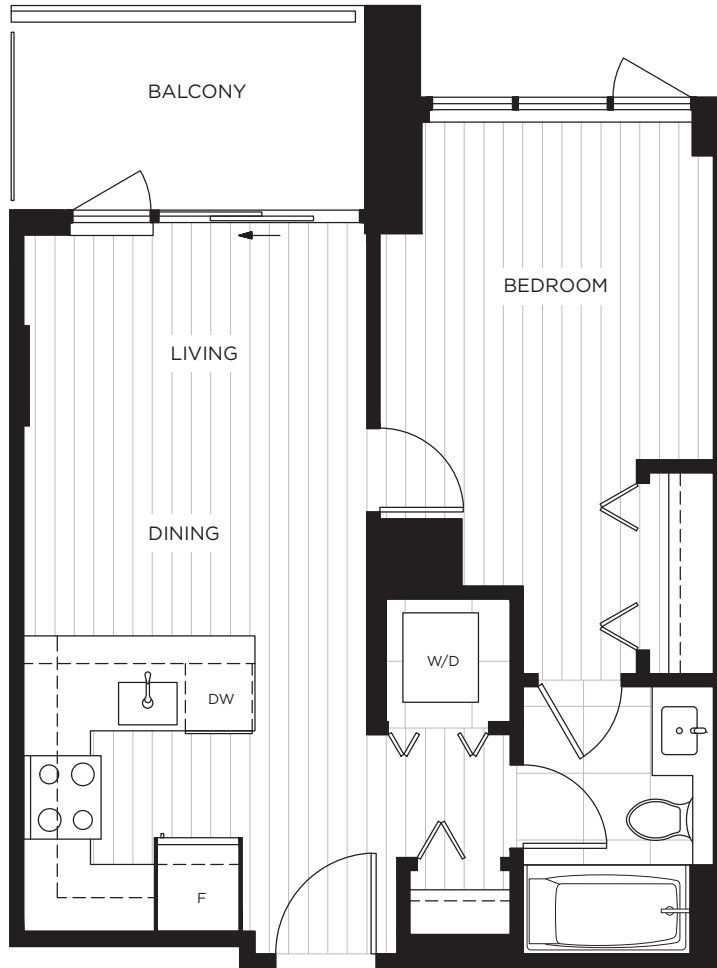
1 BEDROOM

1 BATH

INDOOR LIVING: 515 SQ. FT.

OUTDOOR LIVING: 51-58 SQ. FT.

TOTAL: 566-573 SQ. FT.



The developer and the landlord reserve the right to modify or change dimensions, sizes, layouts, orientations, and materials should they be necessary. Any measurements provided are approximate. Actual suite sizes are as per the architectural drawings. Patio, terrace and balcony sizes vary per plan and floor level. Windows, columns, privacy screens, demising walls, spandrel and guardrail details may vary depending on the plan and floor level. Final floor plans may be a mirror image of the floor plans shown. The quality suites at Highpoint are built by LM Highpoint Homes Limited Partnership. E. & O.E.



HIGHPOINT
LUXURY RENTAL HOMES

B3 PLAN

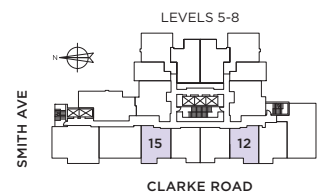
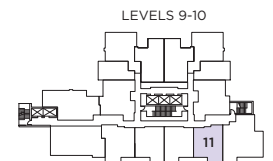
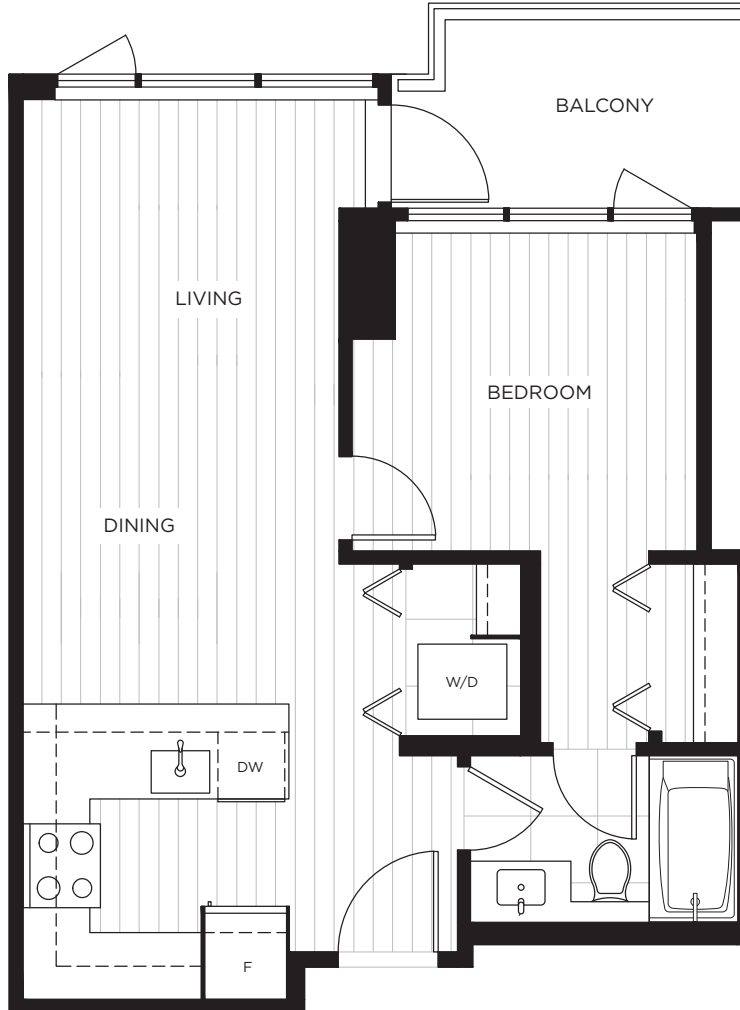
1 BEDROOM

1 BATH

INDOOR LIVING: 553 SQ. FT.

OUTDOOR LIVING: 48-53 SQ. FT.

TOTAL: 601-606 SQ. FT.



The developer and the landlord reserve the right to modify or change dimensions, sizes, layouts, orientations, and materials should they be necessary. Any measurements provided are approximate. Actual suite sizes are as per the architectural drawings. Patio, terrace and balcony sizes vary per plan and floor level. Windows, columns, privacy screens, demising walls, spandrel and guardrail details may vary depending on the plan and floor level. Final floor plans may be a mirror image of the floor plans shown. The quality suites at Highpoint are built by LM Highpoint Homes Limited Partnership. E. & O.E.



HIGHPOINT
LUXURY RENTAL HOMES

B3 PLAN

SUITES 310, 313

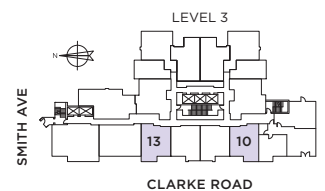
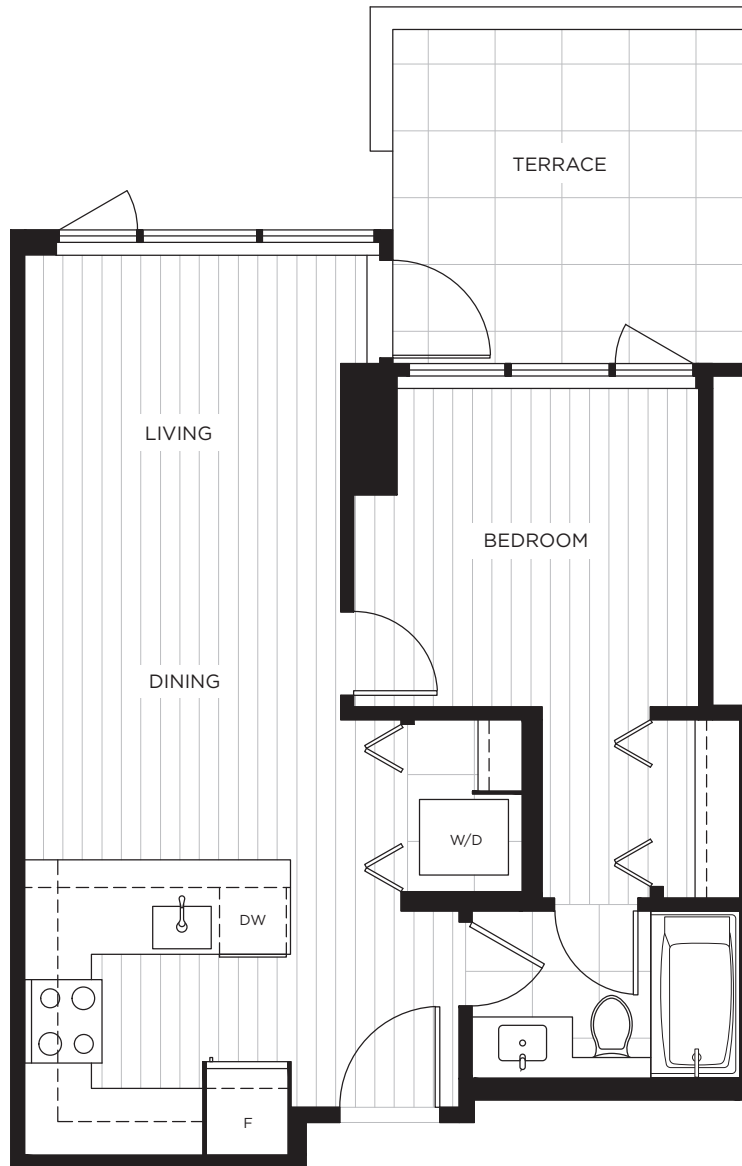
1 BEDROOM

1 BATH

INDOOR LIVING: 553 SQ. FT.

OUTDOOR LIVING: 100 SQ. FT.

TOTAL: 653 SQ. FT.



The developer and the landlord reserve the right to modify or change dimensions, sizes, layouts, orientations, and materials should they be necessary. Any measurements provided are approximate. Actual suite sizes are as per the architectural drawings. Patio, terrace and balcony sizes vary per plan and floor level. Windows, columns, privacy screens, demising walls, spandrel and guardrail details may vary depending on the plan and floor level. Final floor plans may be a mirror image of the floor plans shown. The quality suites at Highpoint are built by LM Highpoint Homes Limited Partnership. E. & O.E.

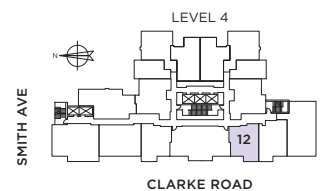
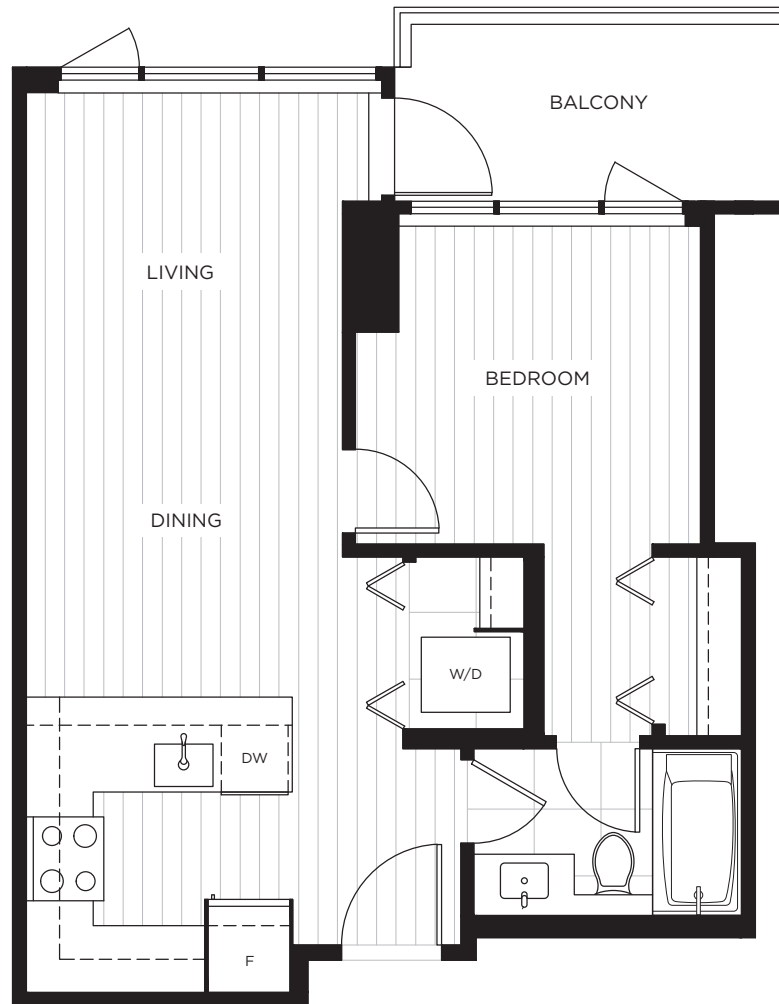


HIGHPOINT
LUXURY RENTAL HOMES

B3 PLAN

SUITE 412
1 BEDROOM
1 BATH

INDOOR LIVING: 553 SQ. FT.
OUTDOOR LIVING: 59 SQ. FT.
TOTAL: 612 SQ. FT.



The developer and the landlord reserve the right to modify or change dimensions, sizes, layouts, orientations, and materials should they be necessary. Any measurements provided are approximate. Actual suite sizes are as per the architectural drawings. Patio, terrace and balcony sizes vary per plan and floor level. Windows, columns, privacy screens, demising walls, spandrel and guardrail details may vary depending on the plan and floor level. Final floor plans may be a mirror image of the floor plans shown. The quality suites at Highpoint are built by LM Highpoint Homes Limited Partnership. E. & O.E.

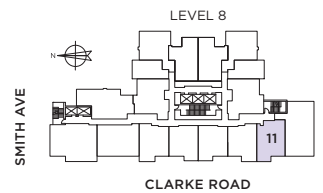
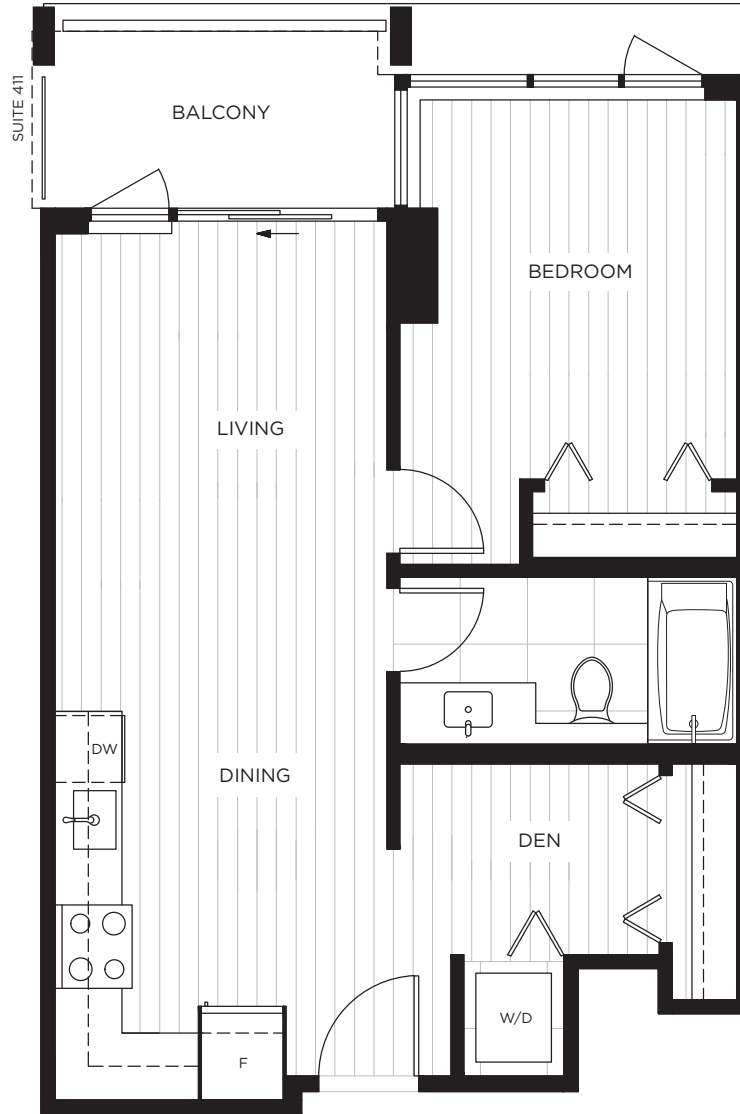


HIGHPOINT
LUXURY RENTAL HOMES

C PLAN

1 BEDROOM & DEN 1 BATH

INDOOR LIVING: 590 SQ. FT.
OUTDOOR LIVING: 93 SQ. FT.
TOTAL: 683 SQ. FT.



The developer and the landlord reserve the right to modify or change dimensions, sizes, layouts, orientations, and materials should they be necessary. Any measurements provided are approximate. Actual suite sizes are as per the architectural drawings. Patio, terrace and balcony sizes vary per plan and floor level. Windows, columns, privacy screens, demising walls, spandrel and guardrail details may vary depending on the plan and floor level. Final floor plans may be a mirror image of the floor plans shown. The quality suites at Highpoint are built by LM Highpoint Homes Limited Partnership. E. & O.E.

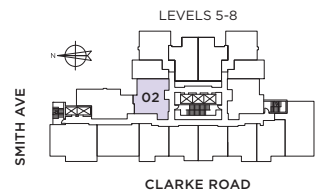
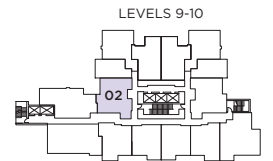
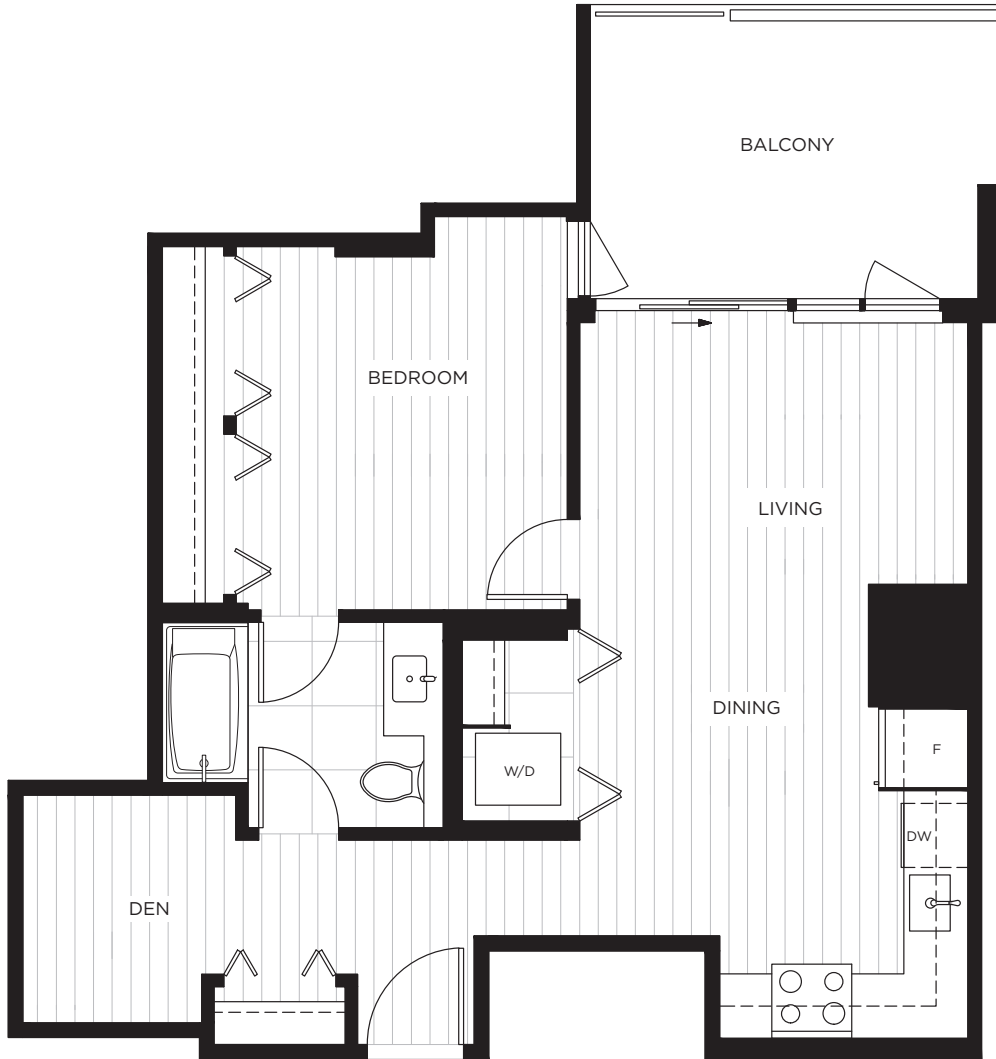


HIGHPOINT
LUXURY RENTAL HOMES

C1 PLAN

1 BEDROOM & DEN 1 BATH

INDOOR LIVING: 644-649 SQ. FT.
OUTDOOR LIVING: 104 SQ. FT.
TOTAL: 748-753 SQ. FT.



The developer and the landlord reserve the right to modify or change dimensions, sizes, layouts, orientations, and materials should they be necessary. Any measurements provided are approximate. Actual suite sizes are as per the architectural drawings. Patio, terrace and balcony sizes vary per plan and floor level. Windows, columns, privacy screens, demising walls, spandrel and guardrail details may vary depending on the plan and floor level. Final floor plans may be a mirror image of the floor plans shown. The quality suites at Highpoint are built by LM Highpoint Homes Limited Partnership. E. & O.E.

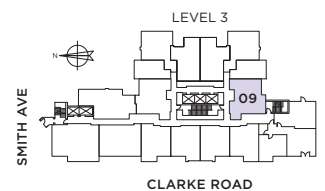
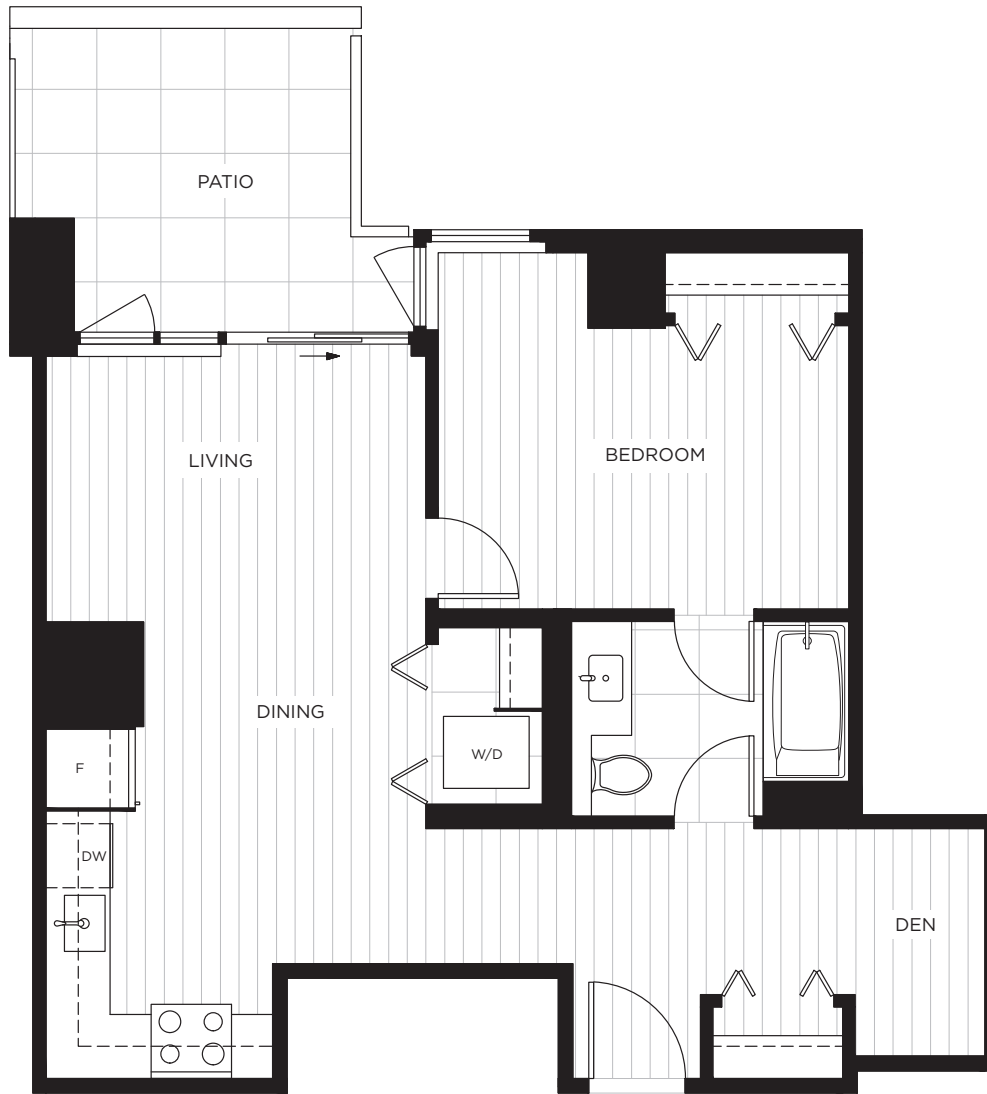


HIGHPOINT
LUXURY RENTAL HOMES

C2 PLAN

SUITE 309
1 BEDROOM & DEN
1 BATH

INDOOR LIVING: 649 SQ. FT.
OUTDOOR LIVING: 97 SQ. FT.
TOTAL: 746 SQ. FT.



The developer and the landlord reserve the right to modify or change dimensions, sizes, layouts, orientations, and materials should they be necessary. Any measurements provided are approximate. Actual suite sizes are as per the architectural drawings. Patio, terrace and balcony sizes vary per plan and floor level. Windows, columns, privacy screens, demising walls, spandrel and guardrail details may vary depending on the plan and floor level. Final floor plans may be a mirror image of the floor plans shown. The quality suites at Highpoint are built by LM Highpoint Homes Limited Partnership. E. & O.E.

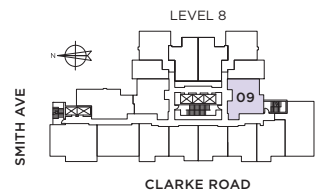
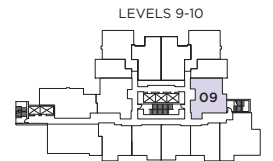


HIGHPOINT
LUXURY RENTAL HOMES

C2 PLAN

1 BEDROOM & DEN 1 BATH

INDOOR LIVING: 647-649 SQ. FT.
OUTDOOR LIVING: 125 SQ. FT.
TOTAL: 772-774 SQ. FT.



The developer and the landlord reserve the right to modify or change dimensions, sizes, layouts, orientations, and materials should they be necessary. Any measurements provided are approximate. Actual suite sizes are as per the architectural drawings. Patio, terrace and balcony sizes vary per plan and floor level. Windows, columns, privacy screens, demising walls, spandrel and guardrail details may vary depending on the plan and floor level. Final floor plans may be a mirror image of the floor plans shown. The quality suites at Highpoint are built by LM Highpoint Homes Limited Partnership. E. & O.E.

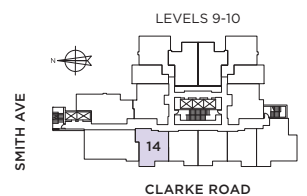
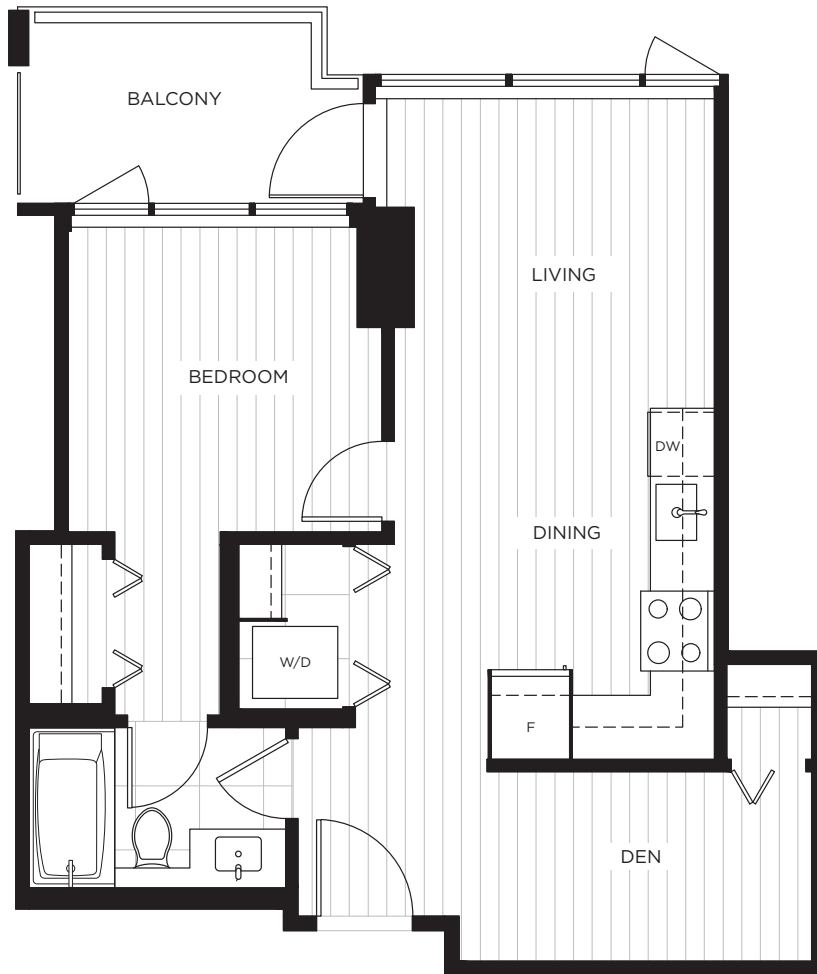


HIGHPOINT
LUXURY RENTAL HOMES

C3 PLAN

1 BEDROOM & DEN 1 BATH

INDOOR LIVING: 584 SQ. FT.
OUTDOOR LIVING: 50-54 SQ. FT.
TOTAL: 634-638 SQ. FT.



The developer and the landlord reserve the right to modify or change dimensions, sizes, layouts, orientations, and materials should they be necessary. Any measurements provided are approximate. Actual suite sizes are as per the architectural drawings. Patio, terrace and balcony sizes vary per plan and floor level. Windows, columns, privacy screens, demising walls, spandrel and guardrail details may vary depending on the plan and floor level. Final floor plans may be a mirror image of the floor plans shown. The quality suites at Highpoint are built by LM Highpoint Homes Limited Partnership. E. & O.E.

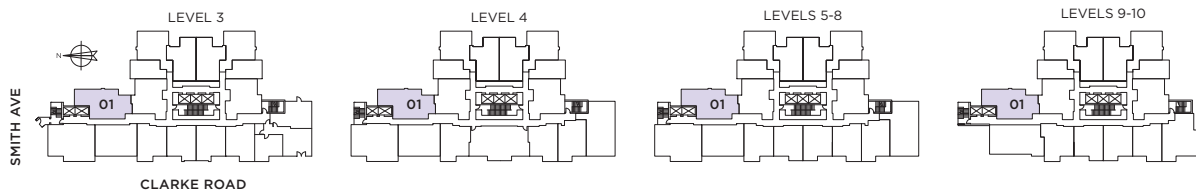
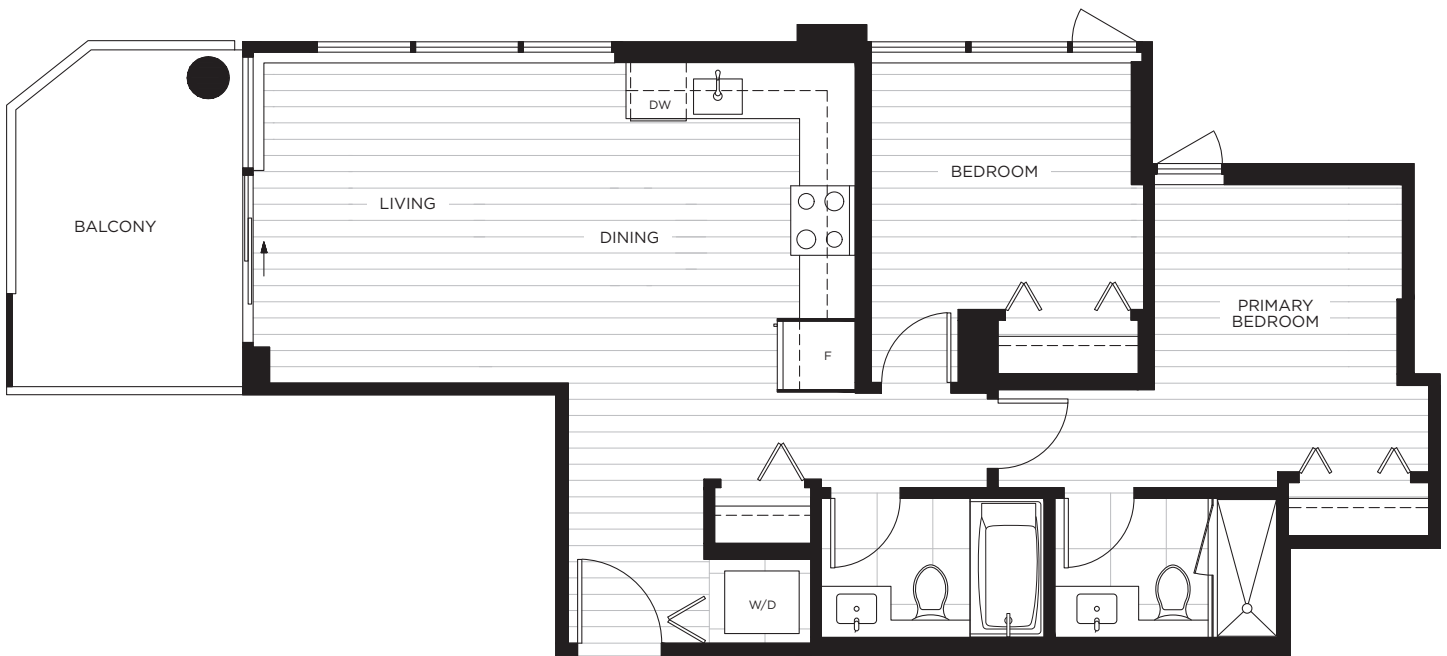


HIGHPOINT
LUXURY RENTAL HOMES

D PLAN

2 BEDROOM
2 BATH

INDOOR LIVING: 763-767 SQ. FT.
OUTDOOR LIVING: 93-94 SQ. FT.
TOTAL: 856-861 SQ. FT.



The developer and the landlord reserve the right to modify or change dimensions, sizes, layouts, orientations, and materials should they be necessary. Any measurements provided are approximate. Actual suite sizes are as per the architectural drawings. Patio, terrace and balcony sizes vary per plan and floor level. Windows, columns, privacy screens, demising walls, spandrel and guardrail details may vary depending on the plan and floor level. Final floor plans may be a mirror image of the floor plans shown. The quality suites at Highpoint are built by LM Highpoint Homes Limited Partnership. E. & O.E.

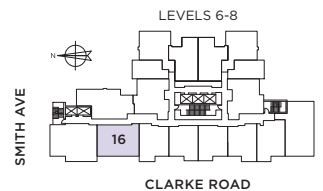


HIGHPOINT
LUXURY RENTAL HOMES

D1 PLAN

**2 BEDROOM
2 BATH**

INDOOR LIVING: 735 SQ. FT.
OUTDOOR LIVING: 166 SQ. FT.
TOTAL: 901 SQ. FT.



The developer and the landlord reserve the right to modify or change dimensions, sizes, layouts, orientations, and materials should they be necessary. Any measurements provided are approximate. Actual suite sizes are as per the architectural drawings. Patio, terrace and balcony sizes vary per plan and floor level. Windows, columns, privacy screens, demising walls, spandrel and guardrail details may vary depending on the plan and floor level. Final floor plans may be a mirror image of the floor plans shown. The quality suites at Highpoint are built by LM Highpoint Homes Limited Partnership. E. & O.E.

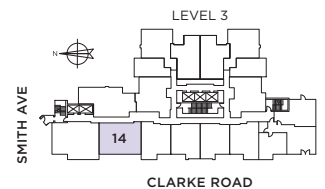
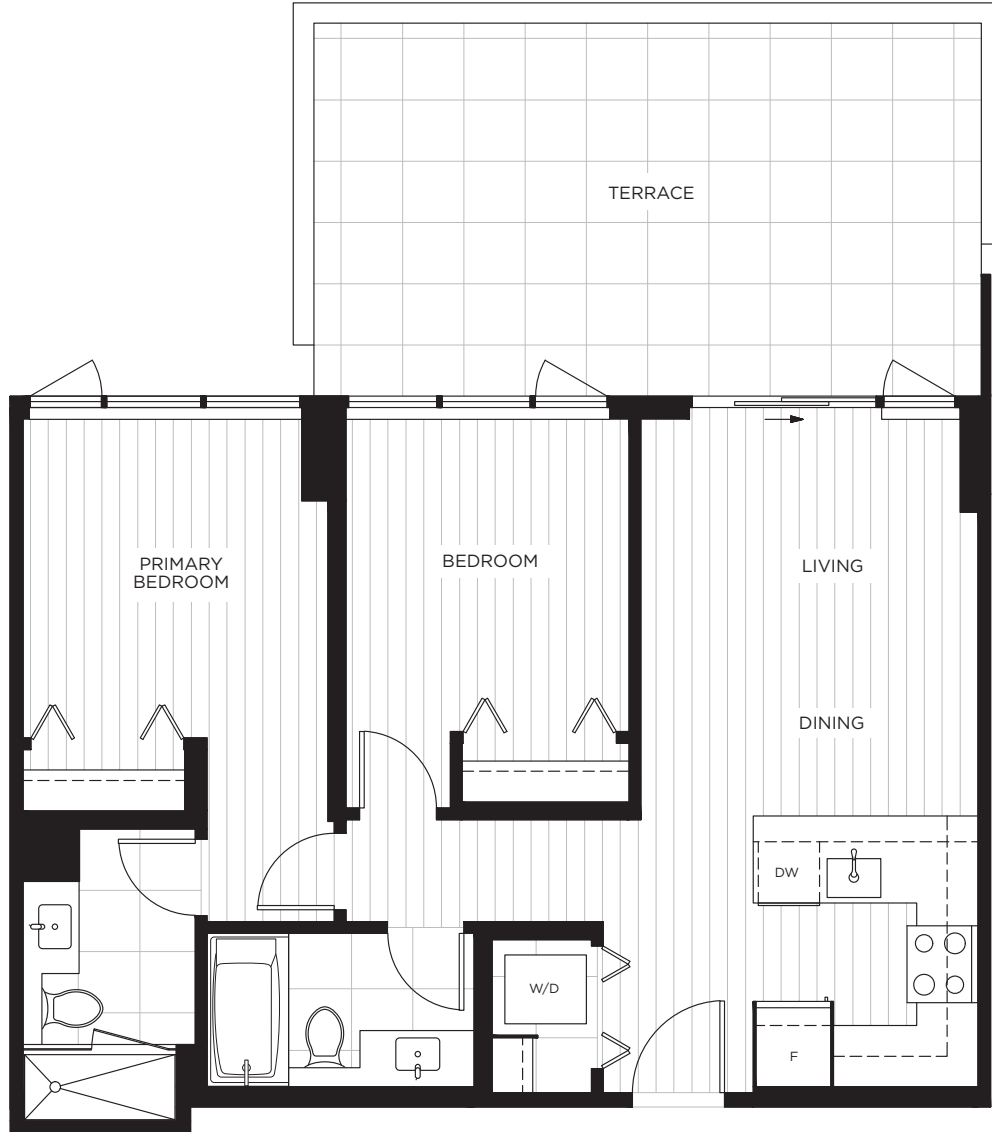


HIGHPOINT
LUXURY RENTAL HOMES

D1 PLAN

SUITE 314
2 BEDROOM
2 BATH

INDOOR LIVING: 735 SQ. FT.
OUTDOOR LIVING: 261 SQ. FT.
TOTAL: 996 SQ. FT.



The developer and the landlord reserve the right to modify or change dimensions, sizes, layouts, orientations, and materials should they be necessary. Any measurements provided are approximate. Actual suite sizes are as per the architectural drawings. Patio, terrace and balcony sizes vary per plan and floor level. Windows, columns, privacy screens, demising walls, spandrel and guardrail details may vary depending on the plan and floor level. Final floor plans may be a mirror image of the floor plans shown. The quality suites at Highpoint are built by LM Highpoint Homes Limited Partnership. E. & O.E.

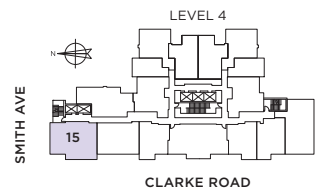
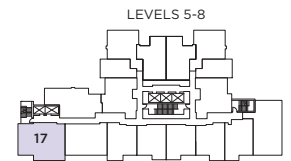
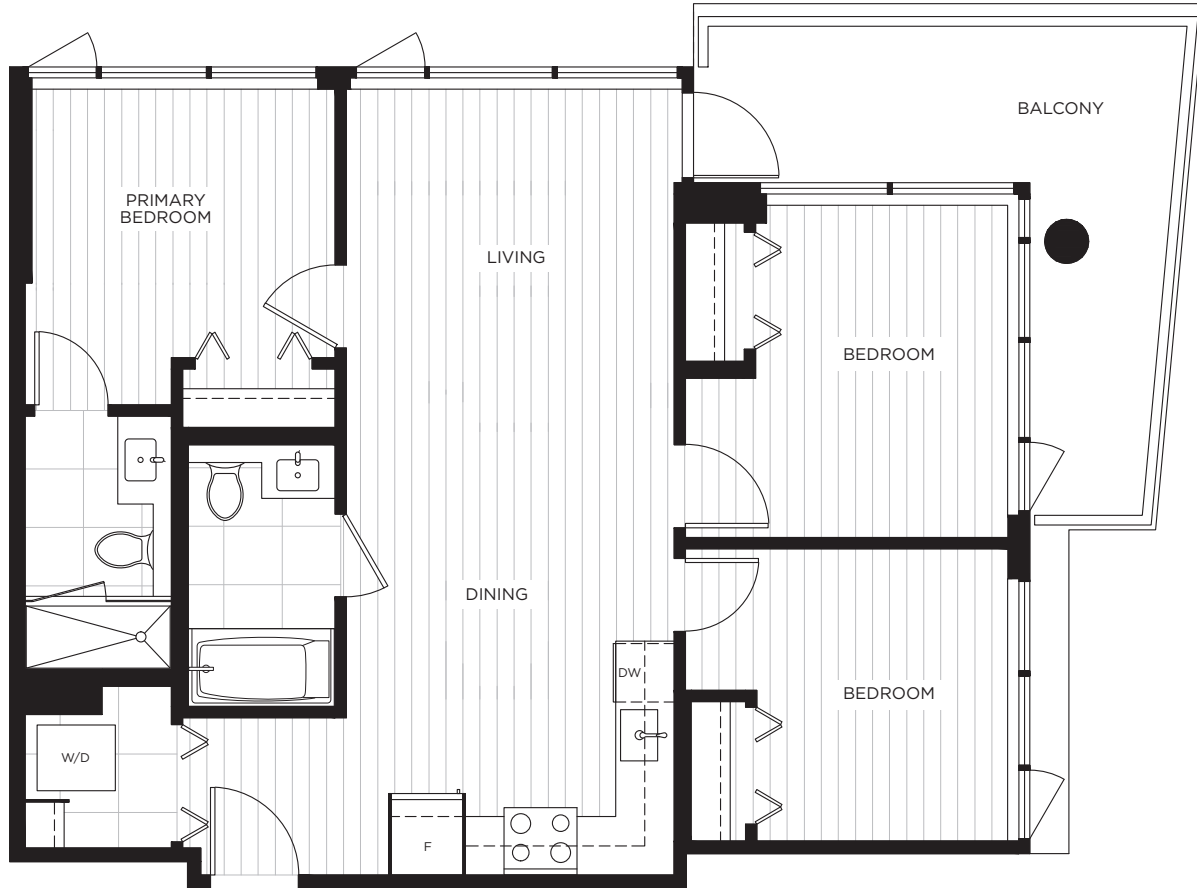


HIGHPOINT
LUXURY RENTAL HOMES

E PLAN

**3 BEDROOM
2 BATH**

INDOOR LIVING: 910 SQ. FT.
OUTDOOR LIVING: 144 SQ. FT.
TOTAL: 1,054 SQ. FT.



The developer and the landlord reserve the right to modify or change dimensions, sizes, layouts, orientations, and materials should they be necessary. Any measurements provided are approximate. Actual suite sizes are as per the architectural drawings. Patio, terrace and balcony sizes vary per plan and floor level. Windows, columns, privacy screens, demising walls, spandrel and guardrail details may vary depending on the plan and floor level. Final floor plans may be a mirror image of the floor plans shown. The quality suites at Highpoint are built by LM Highpoint Homes Limited Partnership. E. & O.E.

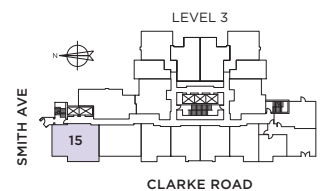
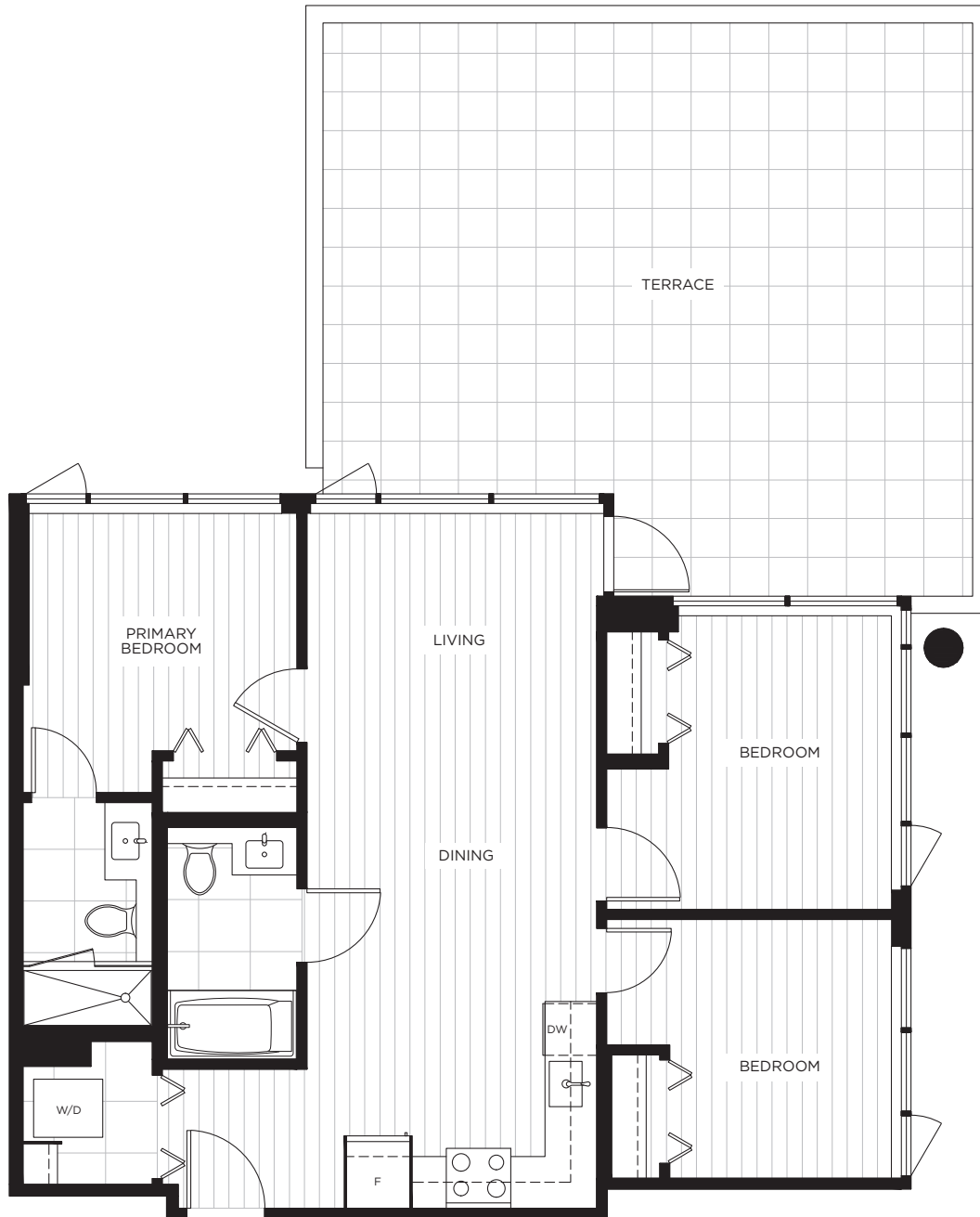


HIGHPOINT
LUXURY RENTAL HOMES

E PLAN

SUITE 315
3 BEDROOM
2 BATH

INDOOR LIVING: 910 SQ. FT.
OUTDOOR LIVING: 510 SQ. FT.
TOTAL: 1,420 SQ. FT.



The developer and the landlord reserve the right to modify or change dimensions, sizes, layouts, orientations, and materials should they be necessary. Any measurements provided are approximate. Actual suite sizes are as per the architectural drawings. Patio, terrace and balcony sizes vary per plan and floor level. Windows, columns, privacy screens, demising walls, spandrel and guardrail details may vary depending on the plan and floor level. Final floor plans may be a mirror image of the floor plans shown. The quality suites at Highpoint are built by LM Highpoint Homes Limited Partnership. E. & O.E.

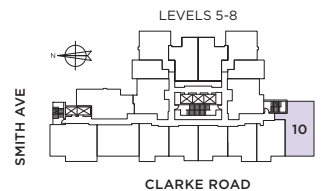
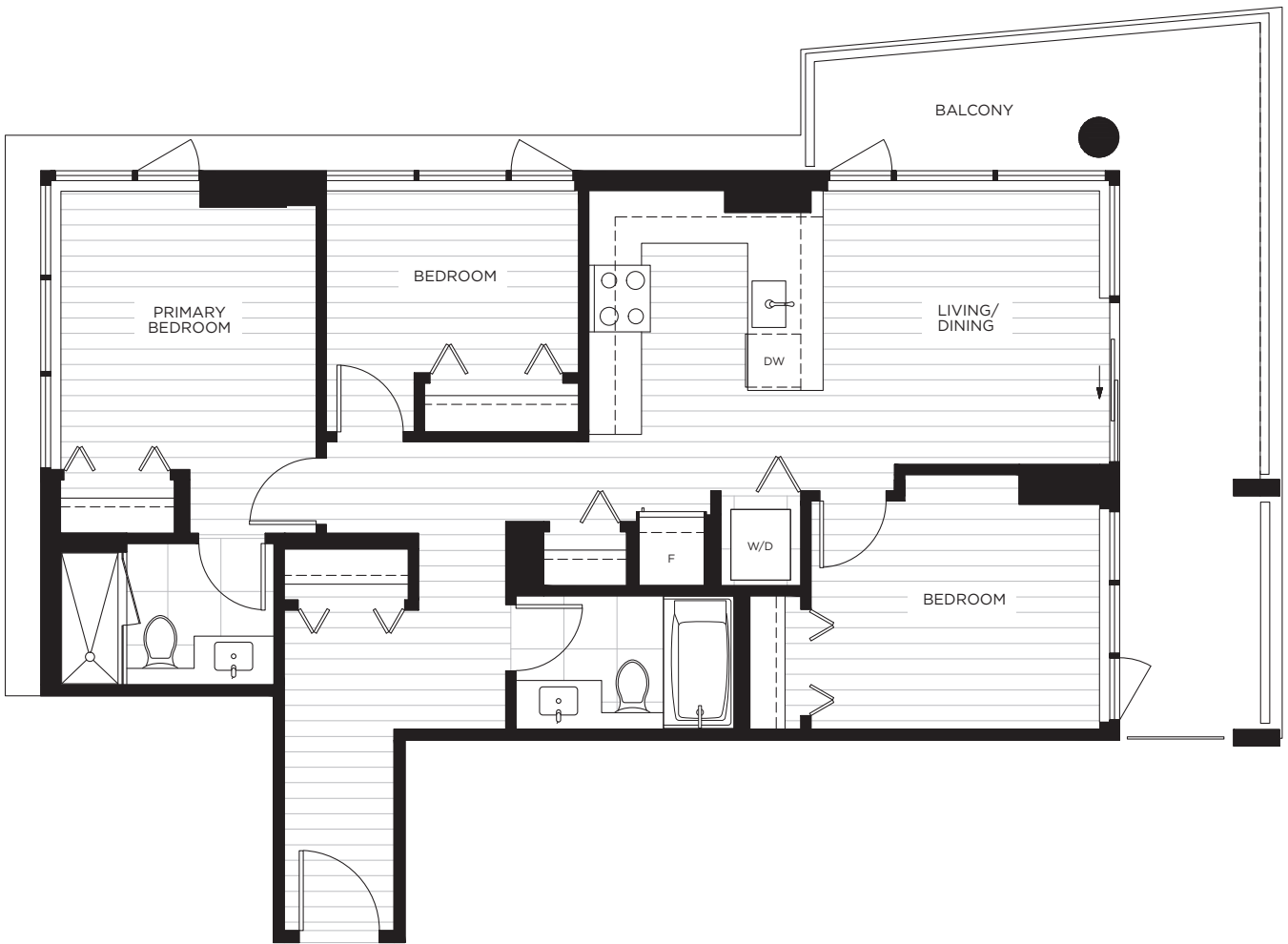


HIGHPOINT
LUXURY RENTAL HOMES

E1 PLAN

3 BEDROOM
2 BATH

INDOOR LIVING: 899 SQ. FT.
OUTDOOR LIVING: 189 SQ. FT.
TOTAL: 1,088 SQ. FT.



The developer and the landlord reserve the right to modify or change dimensions, sizes, layouts, orientations, and materials should they be necessary. Any measurements provided are approximate. Actual suite sizes are as per the architectural drawings. Patio, terrace and balcony sizes vary per plan and floor level. Windows, columns, privacy screens, demising walls, spandrel and guardrail details may vary depending on the plan and floor level. Final floor plans may be a mirror image of the floor plans shown. The quality suites at Highpoint are built by LM Highpoint Homes Limited Partnership. E. & O.E.

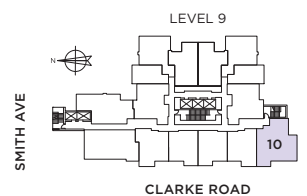


HIGHPOINT
LUXURY RENTAL HOMES

E2 PLAN

SUITE 910
3 BEDROOM
2 BATH

INDOOR LIVING: 862 SQ. FT.
OUTDOOR LIVING: 950 SQ. FT.
TOTAL: 1,812 SQ. FT.



The developer and the landlord reserve the right to modify or change dimensions, sizes, layouts, orientations, and materials should they be necessary. Any measurements provided are approximate. Actual suite sizes are as per the architectural drawings. Patio, terrace and balcony sizes vary per plan and floor level. Windows, columns, privacy screens, demising walls, spandrel and guardrail details may vary depending on the plan and floor level. Final floor plans may be a mirror image of the floor plans shown. The quality suites at Highpoint are built by LM Highpoint Homes Limited Partnership. E. & O.E.

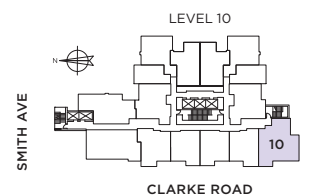


HIGHPOINT
LUXURY RENTAL HOMES

E2 PLAN

SUITE 1010
3 BEDROOM
2 BATH

INDOOR LIVING: 862 SQ. FT.
OUTDOOR LIVING: 227 SQ. FT.
TOTAL: 1,089 SQ. FT.



The developer and the landlord reserve the right to modify or change dimensions, sizes, layouts, orientations, and materials should they be necessary. Any measurements provided are approximate. Actual suite sizes are as per the architectural drawings. Patio, terrace and balcony sizes vary per plan and floor level. Windows, columns, privacy screens, demising walls, spandrel and guardrail details may vary depending on the plan and floor level. Final floor plans may be a mirror image of the floor plans shown. The quality suites at Highpoint are built by LM Highpoint Homes Limited Partnership. E. & O.E.

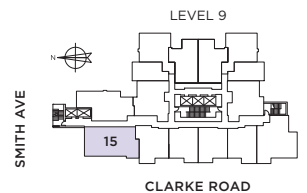
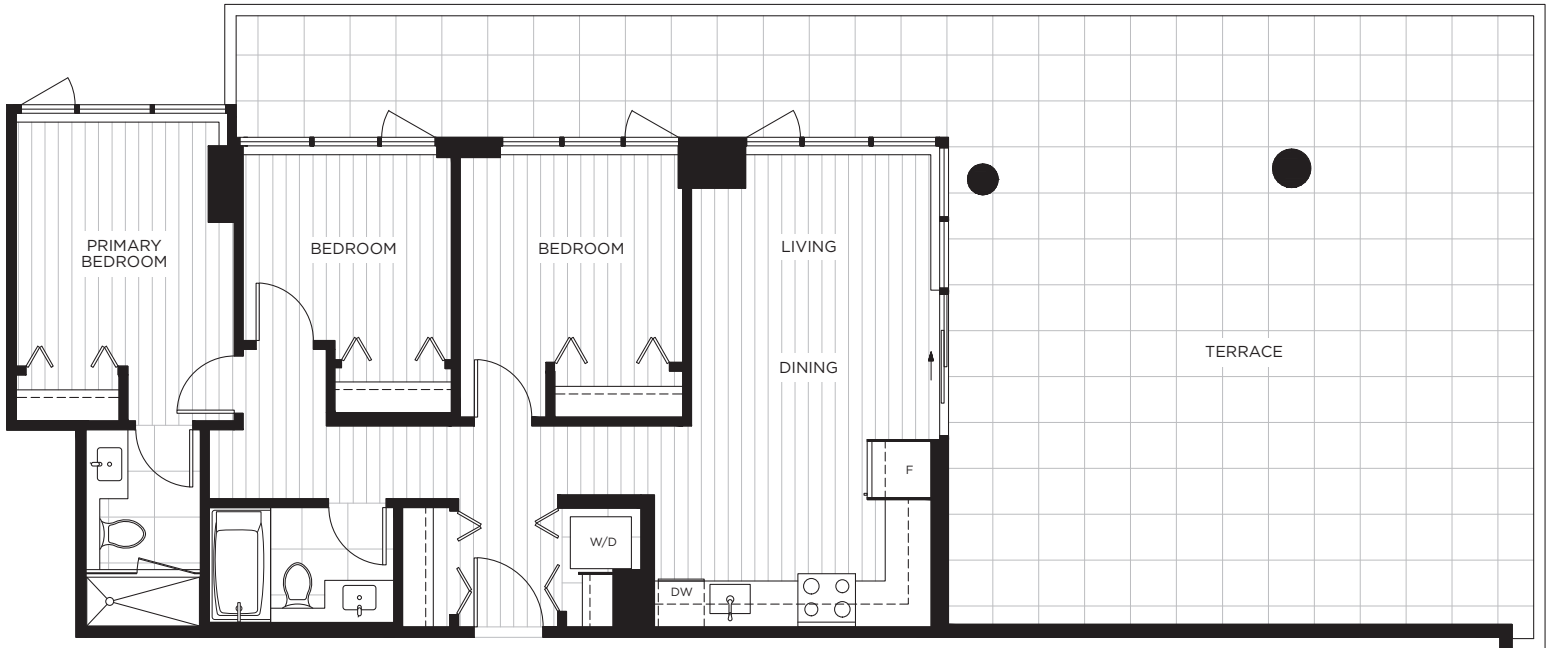


HIGHPOINT
LUXURY RENTAL HOMES

E3 PLAN

SUITE 915
3 BEDROOM
2 BATH

INDOOR LIVING: 870 SQ. FT.
OUTDOOR LIVING: 832 SQ. FT.
TOTAL: 1,702 SQ. FT.



The developer and the landlord reserve the right to modify or change dimensions, sizes, layouts, orientations, and materials should they be necessary. Any measurements provided are approximate. Actual suite sizes are as per the architectural drawings. Patio, terrace and balcony sizes vary per plan and floor level. Windows, columns, privacy screens, demising walls, spandrel and guardrail details may vary depending on the plan and floor level. Final floor plans may be a mirror image of the floor plans shown. The quality suites at Highpoint are built by LM Highpoint Homes Limited Partnership. E. & O.E.



HIGHPOINT

LUXURY RENTAL HOMES

E3 PLAN

SUITE 1015
3 BEDROOM
2 BATH

INDOOR LIVING: 870 SQ. FT.
OUTDOOR LIVING: 359 SQ. FT.
TOTAL: 1,229 SQ. FT.

